

transformative social innovation theory



New Economies & Inclusive Societies What can we learn from the TRANSIT project on Transformative Social Innovation?

Research to Policy Seminar, 15th of March 2017, Brussels



This project has received funding from the European Union's Seventh Framework Programme for research, technological development and demonstration under grant agreement no 613169.

transformative
social innovation
theory

Lunch Seminar

12:30-14:00 Plenary seminar (including lunch)

- TRANSIT project: Transformative Social Innovation & 4 Clusters
New Economy by Flor Avelino
- Institutionalising social innovation? The case of Basic Income by
Bonno Pel
- Transforming public spending? The case of Participatory Budgeting
by Julia Wittmayer & Sarah Rach
- Innovation policies & resourcing challenges. The case of
Timebanking by Paul Weaver

14:00-15:00 In-depth Discussion and Q&A (optional)

www.transitsocialinnovation.eu

transformative
social innovation
theory

drift
for transition



Transformative Social Innovation Introducing TRANSIT & New Economies

Dr. Flor Avelino | DRIFT, Erasmus University of Rotterdam

Assistant Professor | @FlorAvelino | avelino@drift.eur.nl

Research to Policy Seminar, 15th of March 2017, Brussels



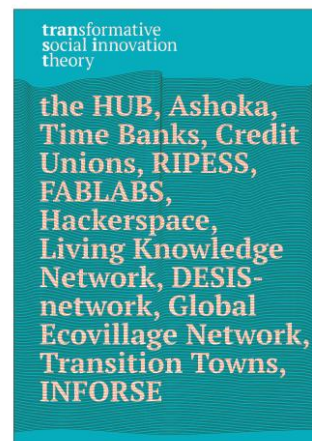
This project has received funding from the European Union's Seventh Framework Programme for research, technological development and demonstration under grant agreement no 613169.



transformative
social innovation
theory

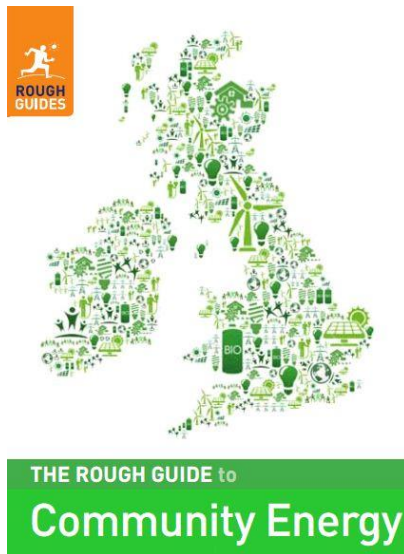
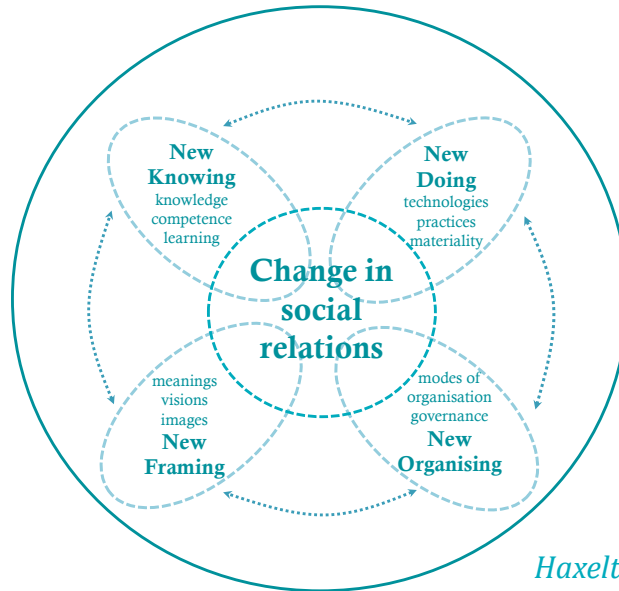


- 2014-2017
- 12 partners, 30 researchers
- EU & Latin-America
- FP7 SSH.2013.3.2-1
- TSI-theory (transformative social innovation)



www.transitsocialinnovation.nl / @TransitSI

Social innovation

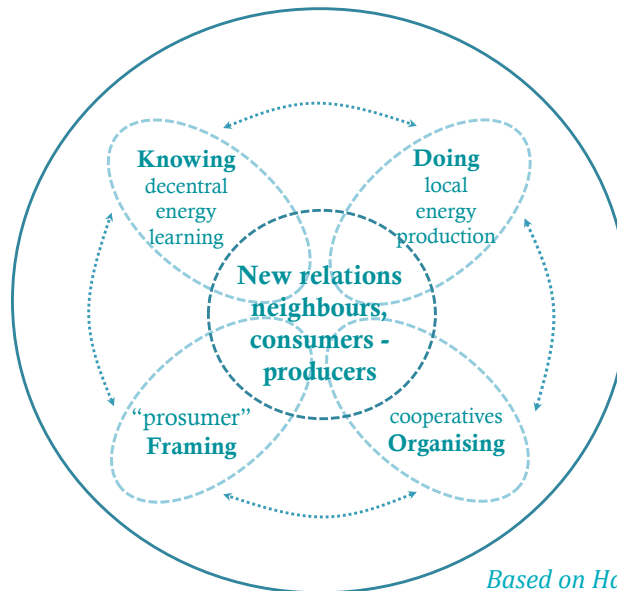


<http://www.westmillsolar.coop>



<http://persoonlijkeruimte.nl/?portfolio=buutenergie-blijstroom>

Example Community Energy



Based on Haxeltine et al. 2015

‘Reinventing’ cooperatives



Complementary currencies



High Expectations of Social Innovation



Former EU commission president José Manuel Barroso:

*“If encouraged and valued, social innovation can **bring immediate solutions to the pressing social issues** that citizens are confronted with.”*

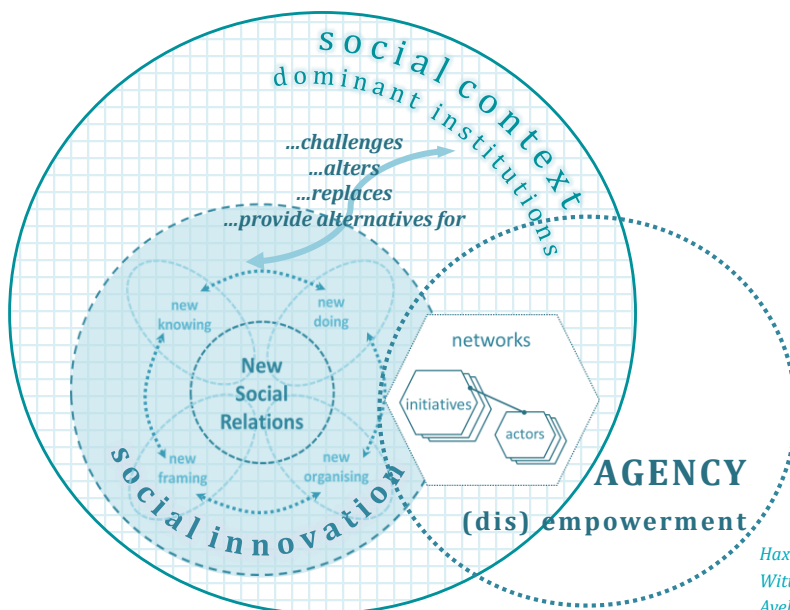
BEPA:

*“At a **time of major budgetary constraints**, social innovation is an **effective way of responding to social challenges**, by mobilising people’s creativity to develop solutions and make better use of scarce resources”.*

www.transitsocialinnovation.eu



Transformative social innovation?



Haxeltine et al. 2016
Wittmayer et al. 2015
Avelino et al. 2014



20 transnational networks

In-depth case-studies & meta-analysis for 80+ local initiatives

28+ countries (EU, LatAm & other)

transformative social innovation theory

WP4 | CASE STUDY Report: [The Transition Movement]

transformative social innovation theory

WP4 | CASE STUDY Report: [Credit Unions]

transformative social innovation theory

WP4 | CASE STUDY Report: Impact Hu

Final Draft 01.02.2015

transformative social innovation theory

Transformative Social Innovation Narrative of the Global Ecovillage Network (GEN)

photos: Iris Kunze

By Iris Kunze and Flor Avelino - DRAFT 2015-02-17

The project has received funding from the European Union's Seventh Framework Programme for research, technological development and demonstration under grant agreement 633397

In-depth case-study reports + synthesis reports

<http://www.transitsocialinnovation.eu/discover-our-cases-2>

Database: 80 TSI Initiatives & Critical Turning Points



Social Innovation Initiatives on the map



RIPRESS/APRES-GE

Chambre de l'économie sociale et solidaire APRES-GE

Thématique: économie sociale et solidaire | Thèmes: Transition

Sub-thèmes: État régional, gouvernement | Statut: Société coopérative | Société coopérative

As a dynamic center of the regional economic development of Geneva, the Solid and Sustainable Economy (SSE) Chamber APRES-GE is a non-profit association which engages for the recognition and the promotion of the SSE at the regional level.

The SSE Chamber aims to: (1) highlight and support initiatives based on social, cultural and ecological principles; (2) include SSE in the political agenda; (3) develop the regional network of SSE organizations and develop the SSE strategy of the national level; (4) foster the visibility of its members; (5) develop social entrepreneurship by supporting project generation; (6) facilitate contacts between SSE producers and SSE consumers in order to strengthen ethical consumption.

The SSE Chamber aims: (1) social well-being; (2) participative governance; (3) support for the environment; (4) sustainability; (5) solidarity; (6) diversity; (7) education.

Click the buttons to switch timeline view

Related timeline | Linear timeline

2004

The creation of APRES-GE

APRES-GE was created in 2004 as a result of the transition to 'Economie Sociale et Solidaire' (the acronym of French and Italian) Chamber (SSE of Geneva/Solidaire), and merged in 2014. Until then, there were two main partners: one was a public entity and the other was a private one.

[Read more](#)

2005-2011

Searching for a Charter of values and membership articles

This CTP is about the development of the Charter of values of the Chamber in 2005, which will be the main text reference for the Chamber in 2011.

[Read more](#)

2007-2011

Period of development and the launch of social products

This CTP is about the launch of two major projects which influenced the development of the Chamber. The two projects are the SSE program for investment and the Social Enterprise (SE) program for investment into the development of other initiatives. They were both developed in order to create sustainable and participative in the region and in the SSE Chamber.

[Read more](#)



86
Open Impact Hubs



21
Impact Hubs in the Making



15,000+
Members



5
Regions



An Impact Ecosystem

Where #Impactmakers connect, work, meet, collaborate, innovate, start, grow and scale.



**"WHAT'S THE
INFRASTRUCTURE FOR
REALISING INNOVATIVE
IDEAS?"**

MEMBERSHIP

EVENTS



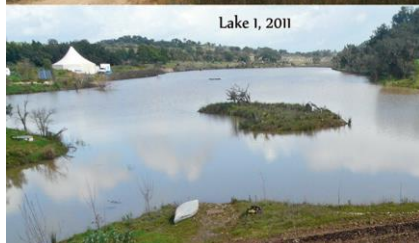
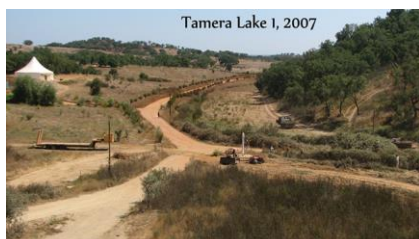
Tamera (Portugal)



Sieben Linden (Germany)



Findhorn (UK)



<http://www.tamera.org/>





Ecodorp Bergen (Netherlands)



Niederkaufungen (Germany)



OUR ECOVILLAGE CSA

OUR GOODY BOX

Fresh, local food and other goodies ready for pick up each week for 20 weeks. Two options available:

June 3 – October 14

- OUR Lifestyle Box (\$650)
- OUR Veggie-only Box (\$650)

WHAT TO EXPECT?

The nature of a CSA is that you don't know exactly what you are getting each week, it depends on the growing conditions which, of course, change constantly. This table gives you a general idea of what will be in your box when:

June-July: green beans, broccoli, chard, garlic, lettuce, peas, kale, spinach, zucchini, various berries

Aug-Sep: green beans, bunch beets, sweet corn, cucumber, peppers, salad greens, tomato, zucchini, blueberries, tree fruit

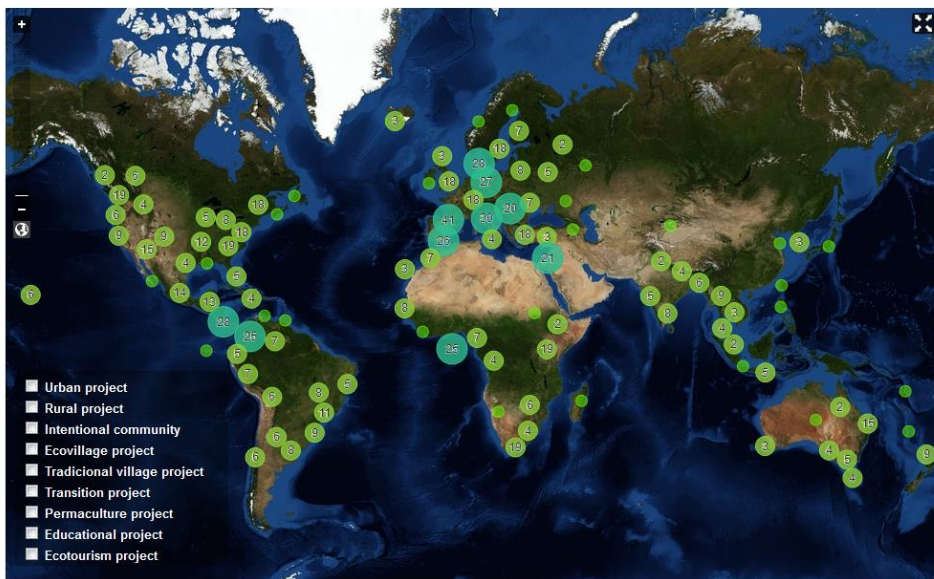
Sep-Oct: keeper beets, cabbage, cauliflower, cucumber, onion, potato, rutabaga, salad greens, winter squash, tomatoes, tree fruit

- Veggie box: enough vegetables for two or three people for a week, fruit as available, and a recipe.
- Lifestyle box: Enough vegetables for three or four people for a week, fruit as available, a recipe, eggs, and special treats from local businesses or off the farm.

To register or for more details:
grow_food@ecovillage.org
 Shawnigan Lake, BC | 250.743.3067
info@ecovillage.org | www.ecovillage.org



Tamera (Portugal)





"If nothing ever changed, there would be no butterflies"

EN ES DE

HOME |

ABOUT GEN ABOUT ECOVILLAGES GEN WORK RESOURCES PARTNERS GET INVOLVED NEWS & RELEASES

A banner featuring a large, colorful butterfly with a globe on its wings. The butterfly is positioned over a background of a tree trunk and a globe. The banner includes the SIRClE logo (Social Innovation for Resilient Communities) and the SOLUTION LIBRARY logo (a lightbulb with a plant growing inside). The Gaia education logo is also present.

<http://gen.ecovillage.org/en>



transformative
social innovation
theory

New Economies

Diversity of ways of framing the (new) economy:

1. Green economy through degrowth & localization
2. Collaborative economy (incl. 'sharing economy')
3. Social entrepreneurship & social economy
4. Solidarity economy

www.transitsocialinnovation.eu

New Economies & Narratives of Change



“incubating social entrepreneurs”
social entrepreneurship
& social economy



“living in local, resilient communities”
degrowth & relocalisation



“sharing & redesigning goods”
collaborative economy



“political institutional reform”
solidarity economy

transformative
social innovation
theory

Renewing social relations

What different narratives on new economies have in common:

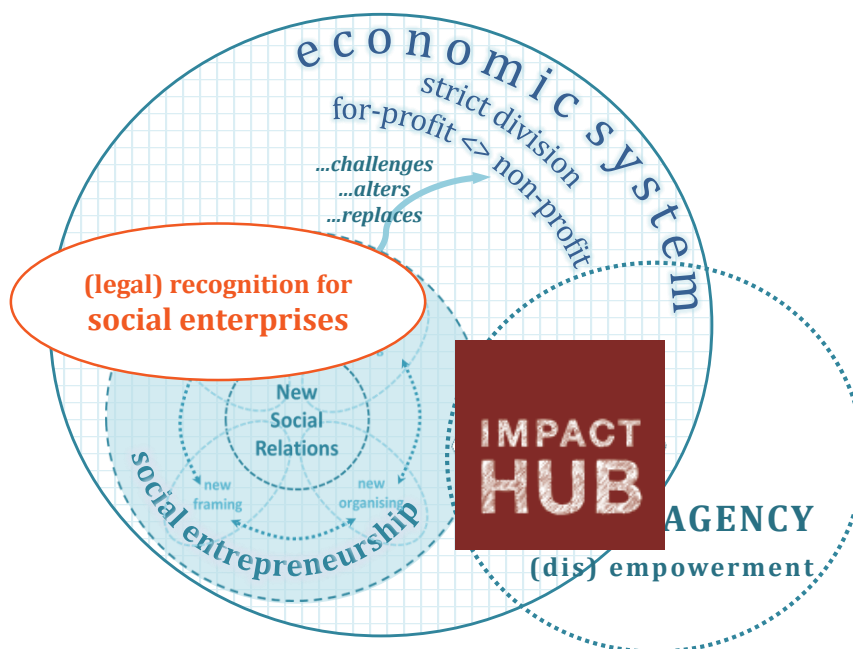
- Social change (e.g. ‘new economy’) needs to be based in the renewal of social relations
- Community building
- Relational values & principles
trust, reciprocity, equality, collectiveness, cooperation, sharing, solidarity, inclusion, transparency, openness, connectedness etc.

www.transitsocialinnovation.eu

Changing Institutional Relations?

- Renewing interpersonal relations as well as societal relations at the institutional level.
- Social innovation crosses the boundaries of different institutional logics and originates in all sectors (state, market, community, 3rd sector, science)
- Changing relations *between* sectors & institutions
- Initiatives challenge existing (boundaries between) institutional logics and (re)-negotiate new / adapted institutional logics

www.transitsocialinnovation.eu



The Institutionalization of Social Innovation between Transformation and Capture

TRANSIT Working Paper 2, 14/10/14

By Bonno Pel & Tom Bauler

<http://www.transitsocialinnovation.eu/working-papers>





transformative
social innovation
theory

Dialectic & hybrid nature of TSI

- Social innovations have a **dialectic relation** with established institutions and structures - they both challenge them and reproduce them.
- SI-initiatives **lack an 'institutional home'** > both opportunity & barrier for transformative impact
- **Hybrid organizational forms** instead of 'stretch & conform'
- Social innovation needs a **portfolio of different - often paradoxical - strategies** towards institutionalization
(*complying, resisting, compromising, exploiting, etc.*)

Zooming in on Solidarity Economy: 3 Cases



“incubating social entrepreneurs”
social entrepreneurship & social economy



“living in local, resilient communities”
degrowth & relocalisation



“sharing & redesigning goods”
collaborative economy

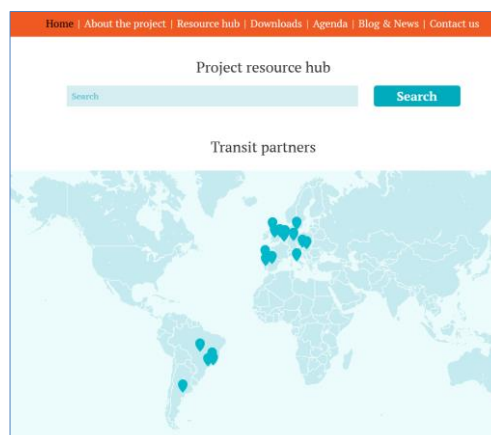


“political institutional reform”
solidarity economy

transformative
social innovation
theory

Thank you.

Dr. Flor Avelino
DRIFT
Erasmus University Rotterdam
avelino@drift.eur.nl
@FlorAvelino



www.transitsocialinnovation.nl / @TransitSI

Game Changers and Transformative Social Innovation. The Case of the Economic Crisis and the New Economy.

TRANSIT Working Paper #1, September 2015

By Flor Avelino, Julia Wittmayer, Alex Hazeltime, René Kemp, Tim Strasser, Paul Weaver, Derk Loorbach and Jan Rotmans

The Institutionalization of Social Innovation Between Transformation and Capture

TRANSIT Working Paper #2, September 2015

By Flor Avelino, Julia Wittmayer, Alex Hazeltime, René Kemp, Tim Strasser, Paul Weaver, Derk Loorbach and Jan Rotmans

Transitions towards New Economies? A Transformative Social Innovation Perspective

TRANSIT Working Paper #3, September 2015

By Flor Avelino, Julia Wittmayer, Adina Dumitru, Noel Longhurst, Sabine Hiescher, Paul Weaver, Carla Cipolla, Rita Afonso, Iris Kunze, Jens Dorland, Morten Elle, Bonno Pel, Tim Strasser, René Kemp and Alex Hazeltime

Narratives of change: How Social Innovation Initiatives engage with their transformative ambitions

TRANSIT Working Paper #4, October 2015

By Julia M. Wittmayer, Julia Backhaus, Flor Avelino, Bonno Pel, Tim Strasser, Iris Kunze

<http://www.transitsocialinnovation.eu/working-papers>

transformative social innovation theory TRANSIT Brief #1

Doing Things Differently

Exploring Transformative Social Innovation and its Practical Challenges.

Kemp et al. 2015

transformative social innovation theory TRANSIT Brief #2

Governance

Co-production challenges in Transformative Social Innovation.

Pel et al. 2015

www.transitsocialinnovation.eu/resource-hub/transit-brief-1



ABOUT

Social innovation has been heralded as an effective way of dealing with societal challenges and has found its way into policy discourses

<https://www.l4csi.org/>

TRANSIT Partners

DRIFT (Coordinator)

Erasmus University of Rotterdam,
the Netherlands

3S-group

University of East Anglia, United Kingdom

ICIS

University of Maastricht, the Netherlands

IHS

Erasmus University of Rotterdam,
the Netherlands

ULB-CEDD

Université Libre de Bruxelles, Belgium

AAU

Aalborg University, Denmark

SPRU

University of Sussex, United Kingdom

www.transitsocialinnovation.eu



transformative
social innovation
theory

IEC-UNQ

Universidad Nacional de Quilmes, Argentina

COPPE

Rio de Janeiro Federal University, Brasil

People-Environment Research Group

Universidade da Coruna, Spain

BOKU

University of Natural Resources and Life Sciences
Vienna, Austria

ESSRG

research and development SME, Hungary

Contact: coordinators

Flor Avelino, Julia Wittmayer, Matthew Bach (DRIFT)



transit@drift.eur.nl



<https://www.facebook.com/transitsocialinnovation>



@TransitSI



<https://www.linkedin.com/transitsocialinnovation>